

The Race Brook Estates Blue Trail System enters from Beecher Road across from the Fitzgerald Track and to the south of Woodside Drive. The area, at one time, was part of the Bussman Estates enjoyed by hikers and wild life. The Bussman heirs sold the acreage and now many Toll Brothers homes dot this land. When walking this trail please be respectful of the many homes abutting this trail system.

The trail is the result of the open space set-aside by regulations enacted by the Woodbridge Town Plan and Zoning Commission to help protect wetlands, trails, open space, habitat and the environment. From this work done by the Town and the Conservation Commission, an area along Race Brook is permanently protected by a conservation restriction, permanent markers, and noted on actual deeds to make abutting owners more aware of the protected open space boundaries. This action by the town was the first of its kind. The Race Brook Conservation Area, including the Race Brook, is an integral part of this track of land.

This trail is an important link from the Center of Town and the Fitzgerald Tract to the Historic Indian Trail - Park Lane Area. Although it is unclear which path the Naugatuck Trail took after it passed through Alice Newton Street Memorial Park, the present path keeps the Naugatuck Trail from being broken up or lost through development. The Woodbridge Land Trust maintains the trail with volunteer help and hopefully this trail will be used and enjoyed for another couple of centuries.

From the Pease Road trail head, the hiker may go west towards the Fitzgerald Tract or south to Historic Indian Trails, which includes many historic trails, foundations, erratics and scenic views of West Rock, East Rock and Long Island Sound.

### Directions and Parking:

On-street parking is available at the trail heads located on Beecher Road, Marion Drive, Loise Drive, Pease Road.

### Permitted/Prohibited Activities:

Passive recreation and hiking. Please do not wonder onto private property this trail has tight boundary restrictions. No Bicycles. May be difficult with pets. Pets must be leashed. Please bag and remove any dog waste.



Hiking



Pets on  
Leash

### For more information about this location, contact:

Woodbridge Land Trust, Inc.  
[woodbridgelandtrust@gmail.com](mailto:woodbridgelandtrust@gmail.com)  
[www.woodbridgelandtrust.org](http://www.woodbridgelandtrust.org)

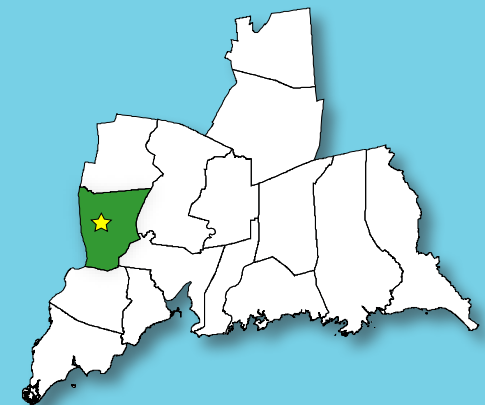
Questions regarding this brochure can be addressed to  
South Central Regional Council of Governments  
Phone: (203) 234-7555/Fax: (203) 234-9850  
E-mail: [trails@scrcog.org](mailto:trails@scrcog.org)

Scan QR Code to access the South Central Regional Council of  
Governments Recreational Trails Webpage



## Recreational Trails South Central Connecticut

# Race Brook Estates Blue Trail System



Woodbridge, CT



# Race Brook Estates Blue Trail System



Photo from the Woodbridge Land Trust

## Trail Description:

### Moderate Hike

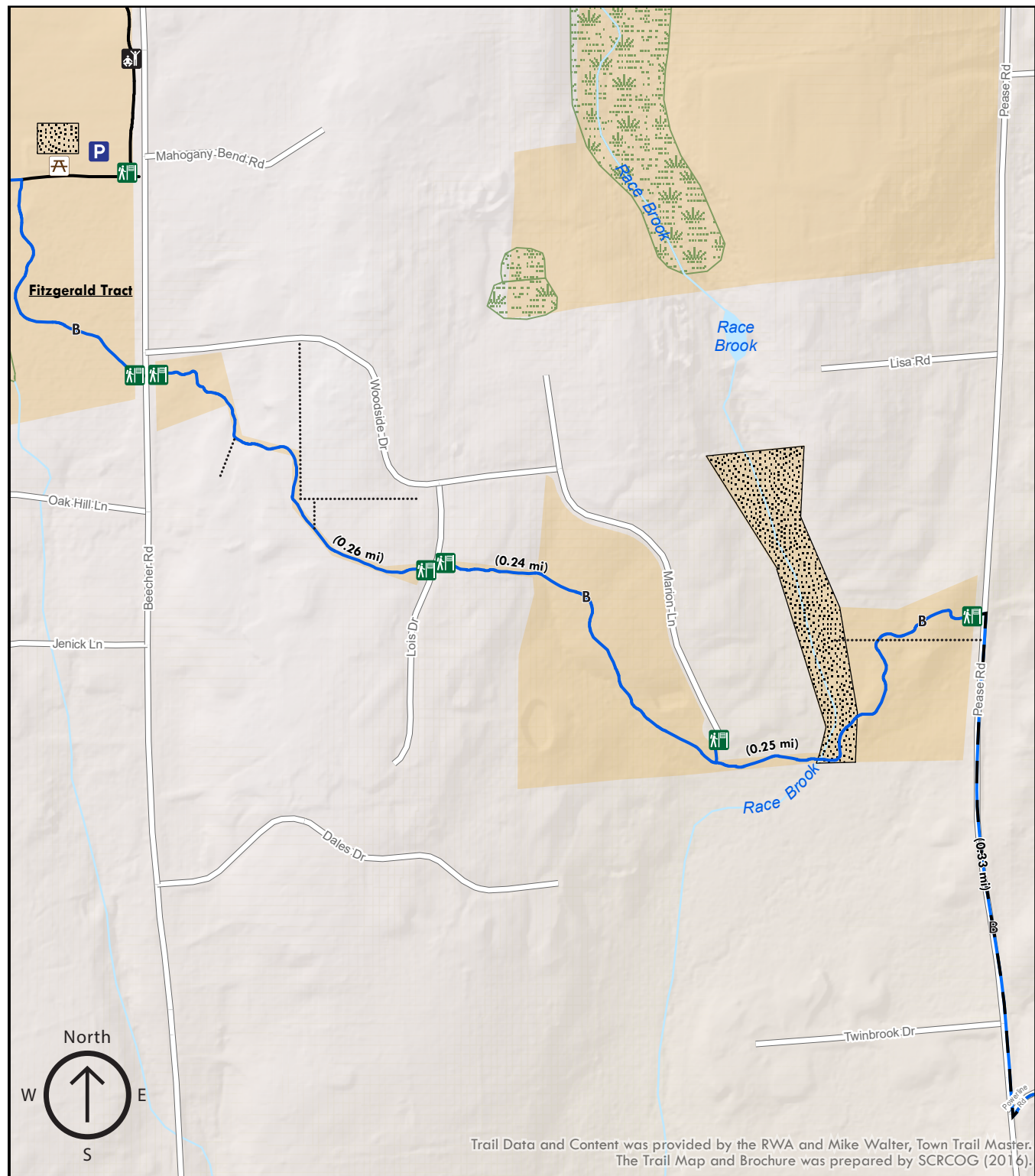
The trail winds through residential development with 28' corridor, some open space, across race brook stream, to another paved road to powerlines. Connects with Indian Trails. Can be wet in some areas.

Total trail length is approx. 0.75 miles

## Legend

- Parking
- Trailhead/Sign
- Exercise/Fitness
- Bench
- Blue Trail (Naugatuck Trail)
- Paved portion of trail
- Stone Wall
- Race Brook Conservation Area
- Wetlands
- Town Property

0 0.15 Kilometers  
0 0.04 Miles



Trail Data and Content was provided by the RWA and Mike Walter, Town Trail Master.  
The Trail Map and Brochure was prepared by SCRCOG (2016).