



The now, 20+ acre Newton Road Park includes a series of brooks that form the headwaters of the Eastern Branch of the Wepawaug River. The Park is graced with several stone walls, wetlands, a small pond and vernal pools. It is a habitat for many birds, reptiles, deer, etc. There are three main trails to hike and enjoy. Some small foot bridges and boardwalk areas as well as a small picnic area.

The park can be accessed from the main trailhead at Hampton Drive (White Trail), or the trailheads (both Red) at Newton Road and behind the north side of the Amity High School Athletic Fields. Look for the Newton Rd Park signs at each trail head. All trails are clearly marked for ease of use. Visitors are welcome year-round to enjoy the beauty of our Wood-bridge trails. Our parks are free and open to all. We ask that you take away any trash you bring in or remove any you might find.

During the mid-1980's, the Town affirmed its commitment to preserving open space in Wood-bridge by requiring developers to donate a percentage of the land on which they build. As a result, important gifts of land were made to the Woodbridge Park Association and conservation restrictions were put on these lands to preserve them as protected open space parcels.

Over the years, through more public/private land donations, the area grew large enough to put some hiking trails in and serve as a sight for Boy Scouts to do service projects. The most recent acquisition was critical, as it provided for a safe access point at #7 Hampton Drive. This access point would allow for parking and aide in being able to maintain the trails, etc.

Directions and Parking:

Take Newton Rd to Hampton Drive. Look for signage to park entrance. The best parking is located at #7 Hampton Drive, where one can access the park at the Trail Head / White Trail. Additional parking may be found at Amity High School, during weekends, holidays or when school is not in session. Parking on Newton Rd. is not recommended, although access to the park is available at the Red Trailhead sign.

Permitted Activities:

This Park is for passive recreation only. Hiking, nature and fauna observing, photography. Pets are welcome but must be leashed.

For more information about this location, contact:

The Woodbridge Park Association, Inc.
www.woodbridgeparks.org or Email:
president@woodbridgeparks.org

This project made possible through a grant from the National Recreational Trails Program, the Federal Highway Administration, and the Connecticut Department of Environmental Protection.



Mapping for this brochure has been produced by John Triana of the Regional Water Authority and Mike Walter, Woodbridge Trail Master.

South Central Regional Council of Governments

127 Washington Avenue, 4th Floor West
 North Haven, CT 06473

Phone: (203) 234-7555
 Fax: (203) 234-9850
 E-mail: trails@scrcog.org

70

NEWTON ROAD PARK TRAIL SYSTEM

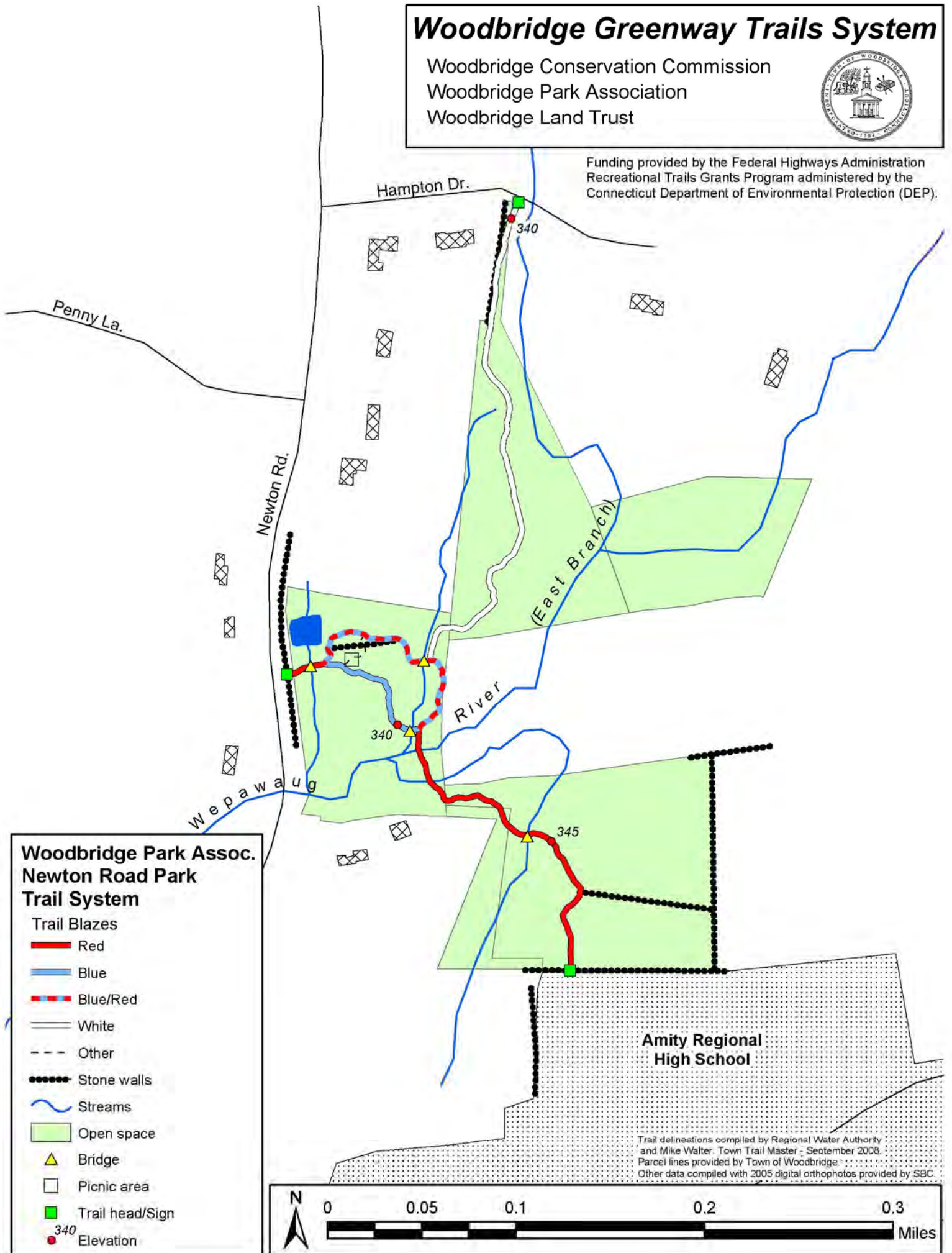
Woodbridge, CT

Woodbridge Greenway Trails System

Woodbridge Conservation Commission
 Woodbridge Park Association
 Woodbridge Land Trust

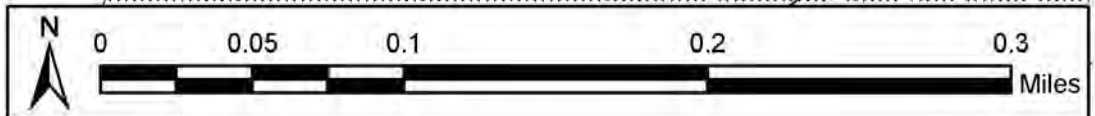


Funding provided by the Federal Highways Administration
 Recreational Trails Grants Program administered by the
 Connecticut Department of Environmental Protection (DEP).



Woodbridge Park Assoc. Newton Road Park Trail System

- Trail Blazes**
- Red
 - Blue
 - Blue/Red
 - White
 - - - Other
 - Stone walls
 - ~ Streams
 - Open space
 - ▲ Bridge
 - Picnic area
 - Trail head/Sign
 - 340 Elevation



Trail delineations compiled by Regional Water Authority
 and Mike Walter, Town Trail Master - September 2008.
 Parcel lines provided by Town of Woodbridge.
 Other data compiled with 2005 digital orthophotos provided by SBC.