

Built in 1891, the Red Bridge is listed on the National Register of Historic Places and is in its original condition. The 78-foot long bridge is representative of a particular pony truss and includes tapered floor beams. The bridge (restored by the Meriden Lions Club), named because one of its wooden predecessors was painted red, was obtained by the Town of Meriden in 1891 as part of a multiple-bridge purchase from the Berlin Iron Bridge Company. The bridge is now used exclusively for the trail.

Photo from the City of Meriden



Water power spurred industry along the river including the Meriden Gorge Carpenter's Dam, which powered a civil war button factory. The dams formed impounded lakes like Hanover Pond and Wallingford's Community Lake. Near Hanover Pond, the "Red Bridge" connected Oregon Road to Cheshire and provided access to recreation at the Pond. The Quinnipiac River and the Gorge area is making a strong recovery from its industrial legacy through habitat and river restoration efforts of the City of Meriden and the Inland Fisheries Division. Their work includes two rock vanes which create thermal refuge for trout during hot summer months when the river temperature rises above optimum temperatures for their survival.

The 1.3 mile paved, multi-use Quinnipiac Gorge Trail was completed in 2006 and sits on the rail bed of the Meriden, Waterbury, & Connecticut River Railroad (circa 1890). The trail starts at Lions Club Park - distinguished by two grand granite columns. The trail follows the rail bed westward along the Gorge with several scenic view- ing areas of the Quinnipiac River and informational kiosks. Portions of the trail which are steep and susceptible to rock slides are noted by split rail fencing and signage.



Directions and Parking:

The Quinnipiac River Gorge Trail can be accessed directly off of River Road (State Route 70).

Handicap Accessible parking areas are available on Oregon Road at the Red Bridge. General Parking is located at the Dossin Beach parking areas adjacent to Hanover Pond. Additional parking is available in a gravel lot on Finch Avenue at the Cheshire Town line.

Permitted Activities:

The multi-use trail is fully handicap accessible. Hiking and canoeing is permitted. This part of the Quinnipiac Gorge is stocked with fish. Fishing is allowed by State license.

Motorized vehicles are prohibited.

For more information about this location, contact:

Town of Meriden
Recreation Program Supervisor
(203) 630-4259

This project made possible through a grant from the National Recreational Trails Program, the Federal Highway Administration, and the Connecticut Department of Environmental Protection.



64

QUINNIPIAC RIVER GORGE

Meriden, CT

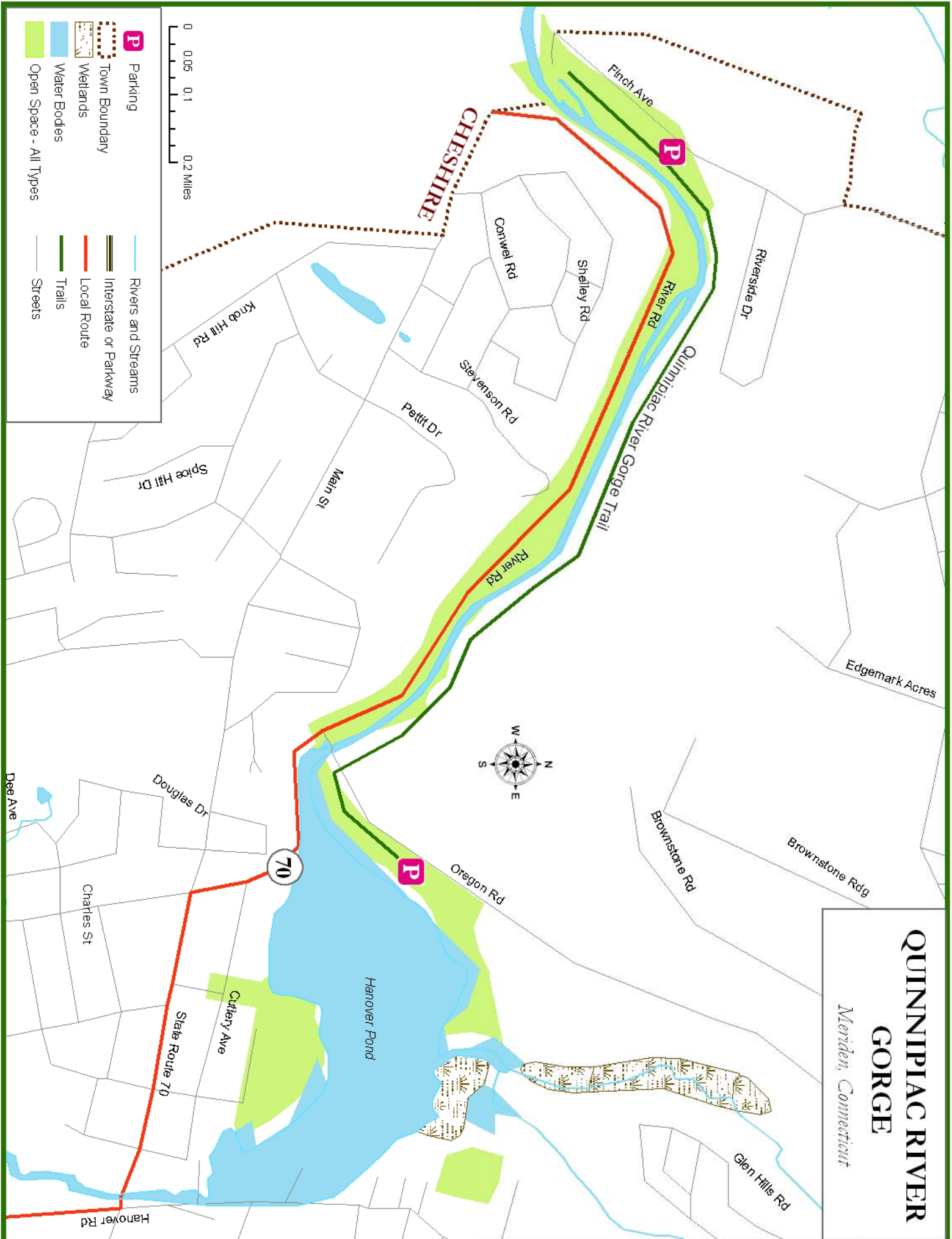
South Central Regional Council of Governments

127 Washington Avenue, 4th Floor West
North Haven, CT 06473

Phone: (203) 234-7555
Fax: (203) 234-9850
E-mail: trails@scrcog.org

QUINNIPIAC RIVER GORGE

Meriden, Connecticut



CHESHIRE



- P** Parking
- Town Boundary
- Wetlands
- Open Space - All Types
- Rivers and Streams
- Interstate or Parkway
- Local Route
- Trails
- Streets
- Water Bodies